

WI-FI LAN- CARRIER CLASS MODEL

Targeting a large outdoor environment for Wi-Fi? Vivato's "single access point" solutions cover exceptionally large areas that typically require over 20 access points and an equal number of deployment sites. Vivato's APs also greatly reduce noise floor issues and provide more stable connections to customers. Deploying Wi-Fi LANs just got a whole lot easier and less expensive.

COMPETITOR

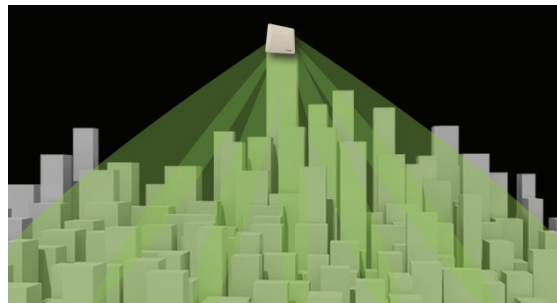
- 13-20 Access Points
- 13-20 Sites
- \$80K - \$200K



One access point or many?

VIVATO

- 1 Access Point
- 1 Site
- \$23,895



- COMPLETE COVERAGE
- EXTENDED RANGE ACCESS POINTS
- REDUCED NOISE

MANUFACTURER	PRODUCT	QUANTITY	MSRP	TOTAL
Motorola	7181	13	\$5,899	\$76,687
Install		13	\$2,500	\$32,500
PTP BH		3	\$7,500	\$22,500
Install		3	\$12,000	\$36,000
AT MONTHLY		3	\$1,350	\$4,050
				\$171,737
FireTide	HP 7020	17	\$2,995	\$50,915
Omni		15	\$365	\$5,475
Install		15	\$2,500	\$37,500
PTP BH		3	\$22,500	\$67,500
Install		3	\$12,000	\$36,000
AT MONTHLY		3	\$1,350	\$4,050
				\$201,440
Aruba	MSR4000	17	\$4,670	\$79,390
Controller	3400	1	\$9,995	\$9,995
AP-ANT-18		17	\$365	\$6,205
AP-85LX-EU-F1		17	\$3,295	\$56,015
Install		17	\$2,200	\$37,400
PTP BH		3	\$7,500	\$22,500
Install		3	\$12,000	\$36,000
AT MONTHLY		3	\$1,350	\$4,050
				\$172,165

MANUFACTURER	PRODUCT	QUANTITY	MSRP	TOTAL
Ruckus	ZF-7731	20	\$389	\$7,780
Controller	7343	1	\$499	\$499
Omni		20	\$365	\$7,300
Install		20	\$2,200	\$44,000
PTP BH		3	\$7,500	\$22,500
Install		3	\$12,000	\$36,000
AT MONTHLY		3	\$1,350	\$4,050
				\$122,129

VIVATO	VT2210	1	\$8,995	\$8,995
Install		1	\$2,500	\$2,500
AT MONTHLY		1	\$450	\$450
BH		1	\$7,500	\$7,500
Install		1	\$7,500	\$7,500
AT MONTHLY		1	\$450	\$450
				\$23,895

*Install includes all cabling, NEMA Boxes, Mounting gear